



Van Diemens Lane  
Chelmsford CM2 9QJ  
Offers In Excess Of £195,000

## Van Diemens Lane, Chelmsford, CM2 9QJ

A spacious one bedroom ground floor flat sold with the benefit of no onward chain and conveniently situated within easy access to Chelmsford City centre.

Built in the late 1980s, this flat is one of only six in the block and includes unallocated off-street parking at the rear. The property is accessed directly from the car park and shares a communal entrance with only two other flats.

Inside, a generous hallway leads to all rooms: a bedroom, kitchen, bathroom, and a living room with direct access to the communal garden at the front.

152 years remaining on the lease (expiry 1st April 2177)

Service charge approx £93.00 per calendar month

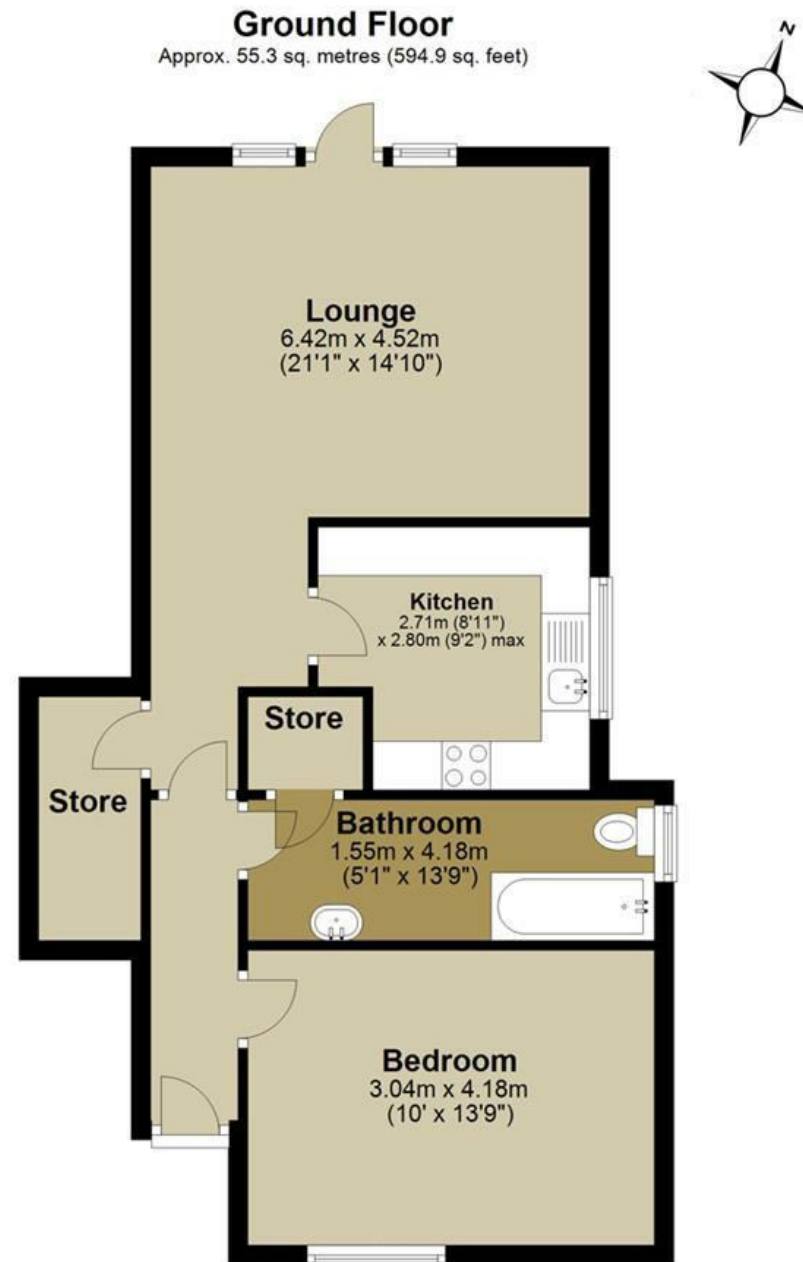
Council Tax Band - B

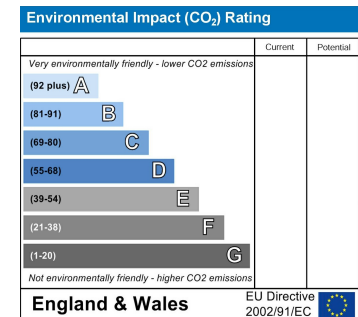
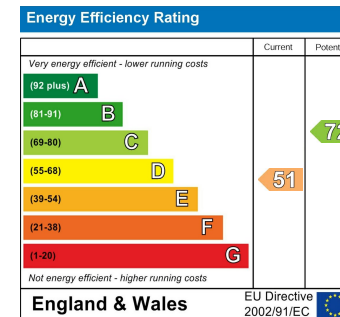
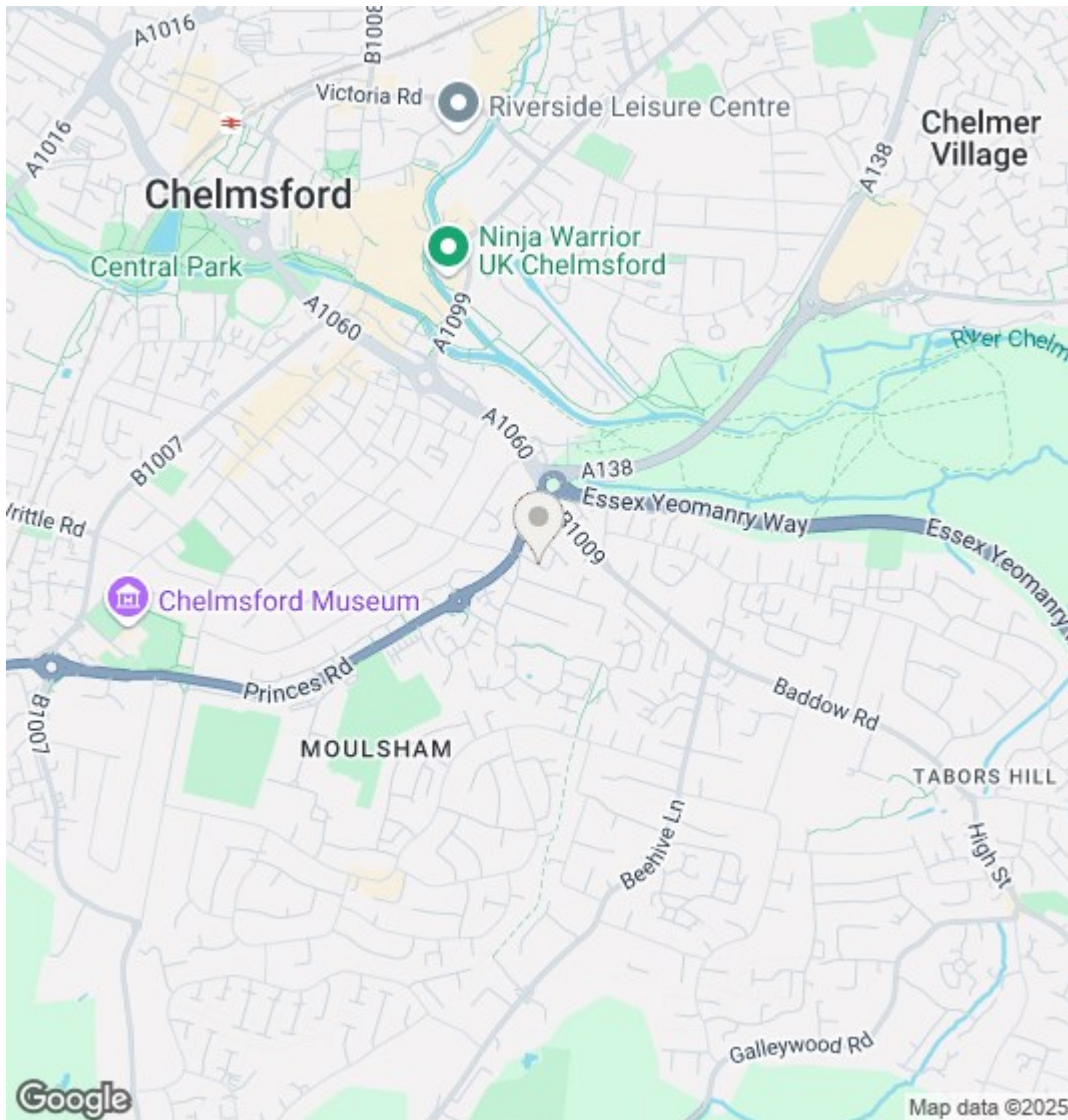












**PLEASE CALL 01277 355005 TO ARRANGE A VIEWING**

**[www.walkersstates.co.uk](http://www.walkersstates.co.uk)**

**INDEPENDENT ESTATE AGENTS - VALUATIONS WITH NO OBLIGATION – PROFESSIONAL SERVICE**

These particulars do not constitute, nor constitute any part of an offer or contract. All measurements are given as a guide, no liability can be accepted for any errors arising therefrom. No responsibility is taken for any other error, omission, or mis-statement in these particulars. Walkers Village & Country Homes Limited do not make or give, whether in these particulars, during negotiations or otherwise, any representation whatsoever in relation to this property.

